



DIGITAL WELD LOG

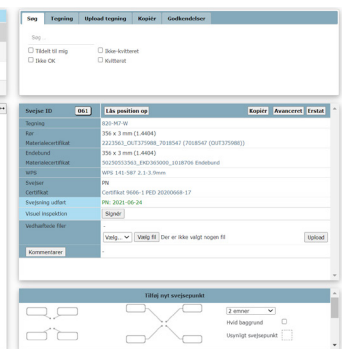
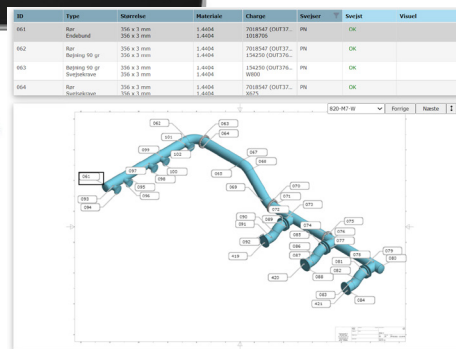
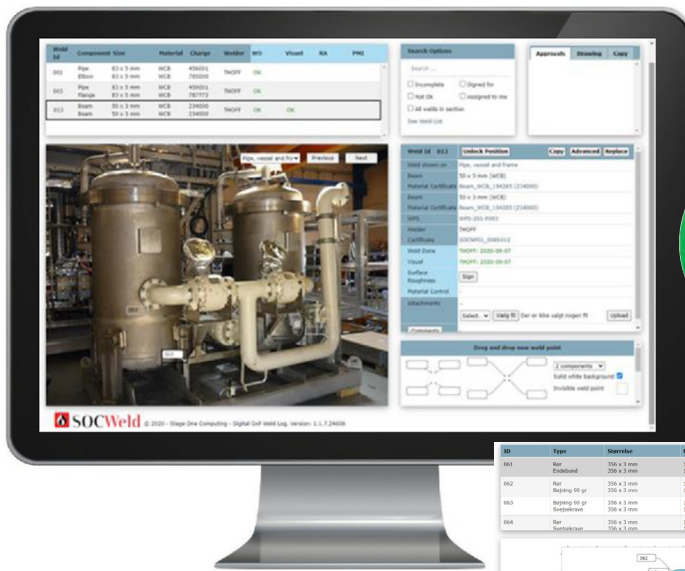


Digital weld log for the metal industry

For those who need safe, fast and easy preparation of welding documentation. SOCWeld is a fully digital, web based software system that supports multiple users simultaneously. It also supports GMP requirements for Pharma.

Benefits for you:

- One-screen user interface, where all information for your welding is stored. For example: WPSs, drawings, pictures, welding and material certificates, NDT test results.
- At the top is a table where the weld log is automatically generated.
- A "canvas" where you retrieve images, isometries and drawings from structures to be welded and applied via the "drag & drop" welding points directly to the drawing.
- Easy sign from welder, QA and NDT people, who just have to make a few clicks, then name, certificate, time and date, comment and photo recorded at each welding point.



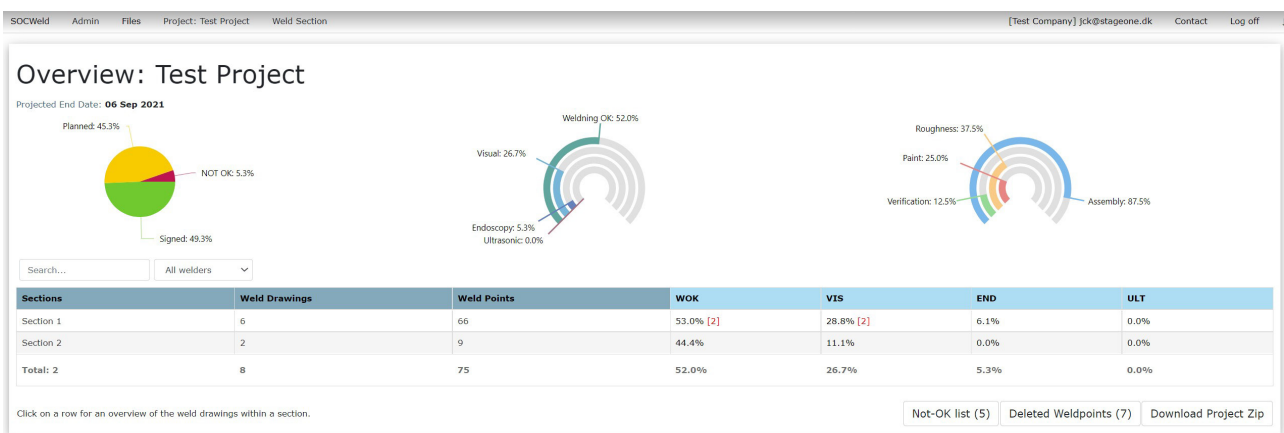
Stage One Computing A/S
Lejrvej 17
DK-3500 Værløse

Phone +45 4738 2038
info@stageone.dk
www.stageone.dk

SOC-Weld
DATA SHEET 09.2021/ ver. 001
©STAGE ONE COMPUTING A/S
page 1/2

Additional benefits for you:

- Prepare up to 100% of your log before the welder starts welding.
- This ensures that you are upfront when preparing your welding log.
- It also helps to optimize your project’s cash flow.
- External access and ongoing approval from the customer and NDT.
- No documentation must be repeatedly sent back and forth to be approved by the customer.
- Complete overview of status / how far are you in your welding project / what is missing.



- Both you and your customer have an overview of the status of the welding project.
- Minimize errors as only the right components, materials certificates, WPSs and similar documents related to the project can be selected when they fit together.
- Incredibly easy to use - no installation or expensive license required, just a web browser.
- Ensures consistent digital quality PDF Welding Log Report.
- Only a minimum of training in using the application is necessary.

